



SOUND BODY. SOUND MIND.

korebalance™



Among older adults, falls are the leading cause of injury deaths and the most common cause of nonfatal injuries and hospital admissions for trauma.

Of those who fall, 20% to 30% suffer moderate to severe injuries such as hip fractures or head traumas that reduce mobility and independence, and increase the risk of premature death





Who we are

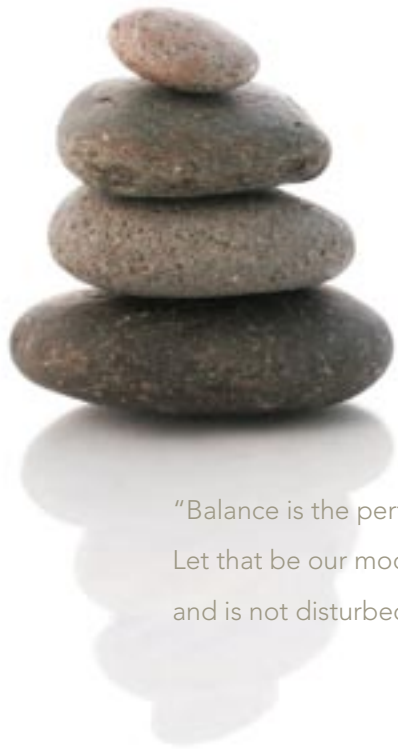
Korebalance is the most innovative high-tech exercise/balance device introduced to Rehab & Long-term care. Backed by 15 years in the Medical and Sports Medicine community, our technology is proven to assess and train balance.

Korebalance radically improves muscle and mental agility while adding stimulating 3-D games to exercise. While working out on the Korebalance™, you are the human joystick--propelled into an interactive virtual world where balance, reaction time, momentum, acceleration, speed drive your routine.



SOUND BODY. SOUND MIND.

korebalance™



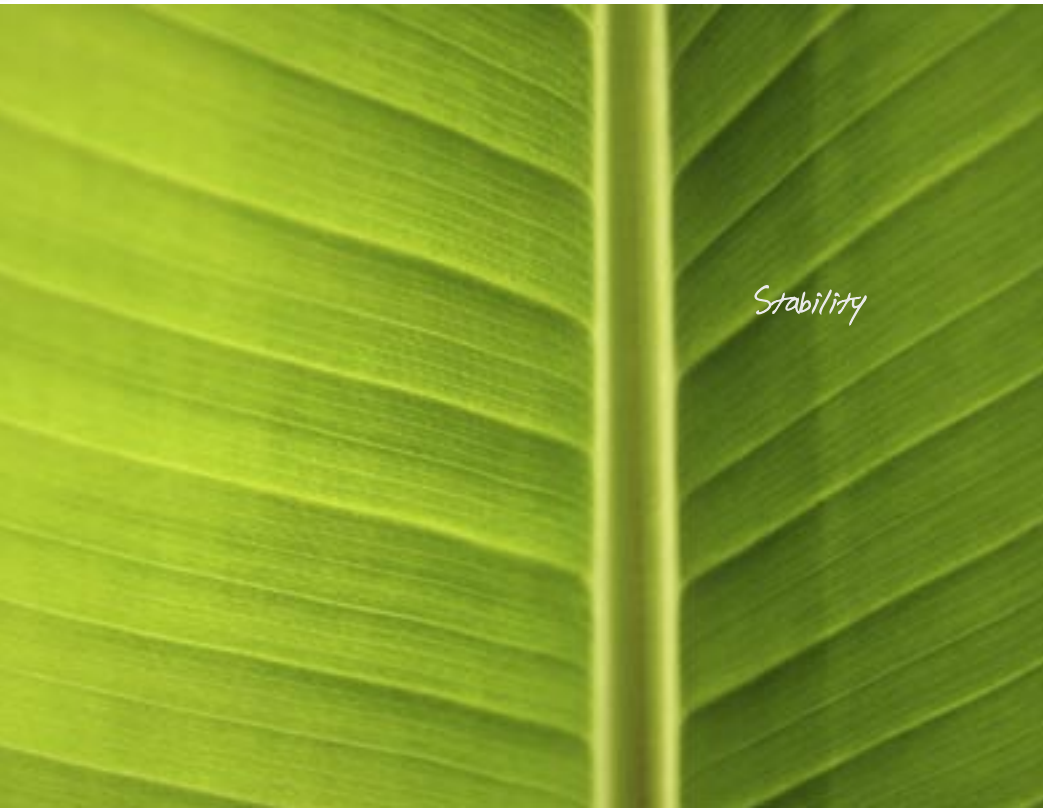
Balance

"Balance is the perfect state of still water.
Let that be our model. It remains quiet within
and is not disturbed on the surface."

~ Confucius



Movement



Stability



Form & Function



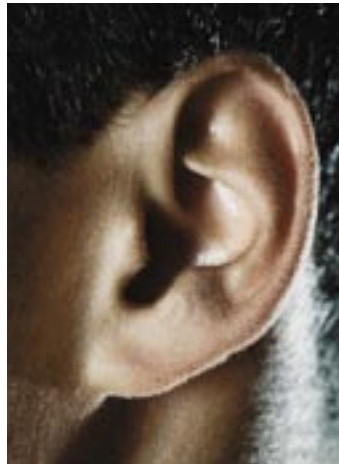
Core

The Chinese use lotus flowers to inspire people to continue striving through difficulties and to show their best part to the outside world, no matter how bad the circumstances may be. This is understood as being just like the lotus flower, bringing beauty and light from the murky darkness at the bottom of the pond. The lotus flower represents the core, finding clarity within — spiritually, physically and mentally. Like the lotus flower KoreBalance™ gets back to the core. To help people find balance in the physical, as well as the mental — a sound body, a sound mind.

How it works

Korebalance™ exercises Visual (eyes), Vestibular (inner ear) and Proprioception (where you are in space) to find/make new pathways in the brain, improving balance.

Your brain acts like the rest of your muscles –it can get stronger, make new ways (or find different ways) of doing the same task. Due to this proven science, our unique technology is in now great demand in the Rehab & Long-term care environment.



SOUND BODY. SOUND MIND.

korebalance™

A man and a woman are sitting on a log in an outdoor setting, laughing together. They are wearing athletic gear, including knee pads and sneakers. The man is wearing an orange hoodie and the woman is wearing a blue jacket. The background shows a grassy field and a clear blue sky.

SOUND BODY.

korebalance™

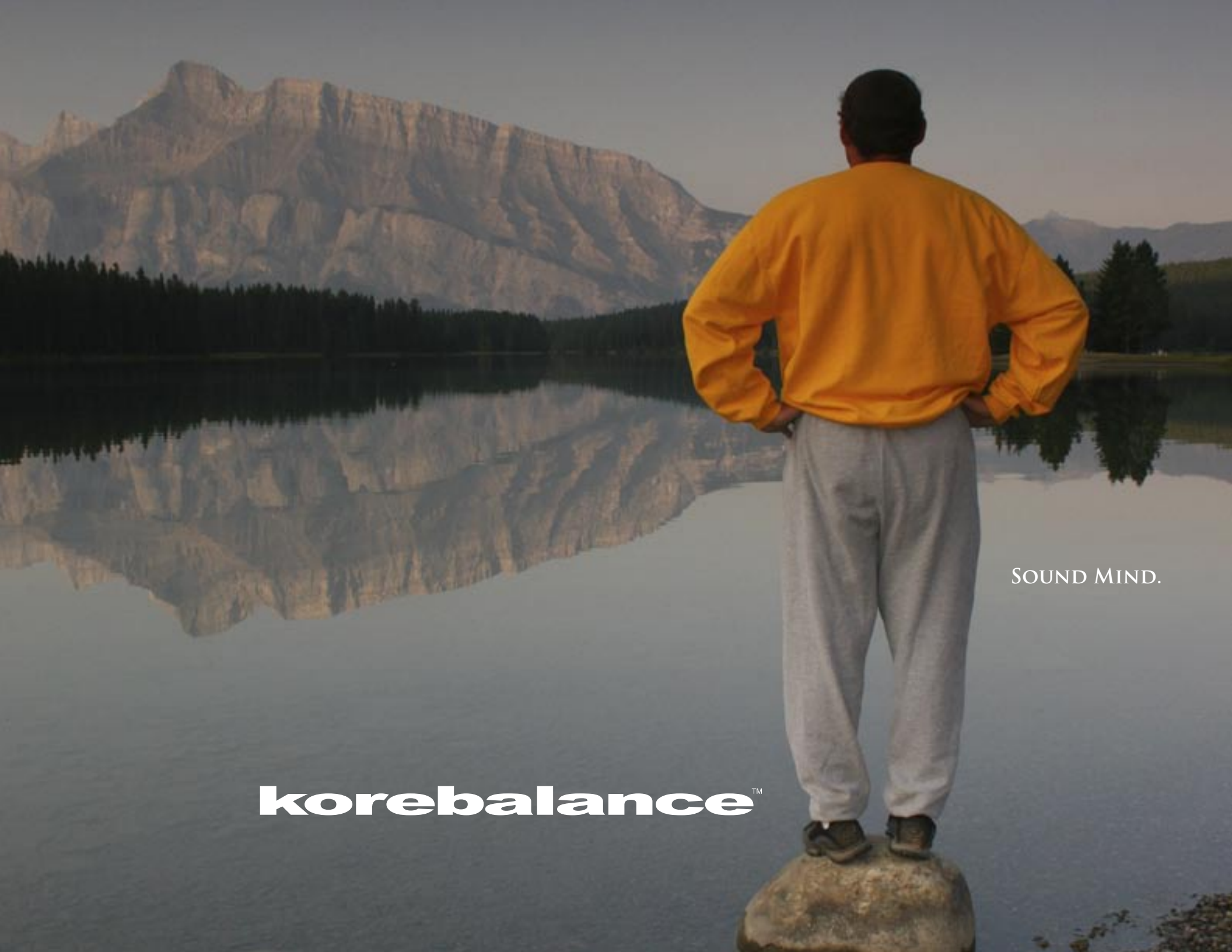
Basic Balance Facts

- Balance is the basic skill needed in every day life
- Balance can be learned, challenged, & improved
- Individuals can train to prevent falls in the future
- Balance training improves simple every day functions
- Balance training is the most important element in post-injury rehabilitation
- Frail elderly persons, who have multiple physiologic deficiencies, are at a significantly increased risk of falls compared with vigorous older persons.



SOUND BODY. SOUND MIND.

korebalance™



SOUND MIND.

korebalance™

General Korebalance™ Benefits

Korebalance™ is a proactive trainer for training and prevention of injuries

- Stimulates the brain and nervous system to improve balance, stability, coordination and posture
- Improves confidence for seniors decreasing the chances of falling
- Improves agility, reaction time and motor control
- Makes workouts challenging, fun and interactive
- Minimizes Repetitive Stress on Joint Structures
- Trains the Body to respond to an Unstable Environment (real-life activities)
- Increases muscle strength, flexibility, range of motion
- Rehabilitates and prevents lower-limb injuries.
- Rehabilitates concussions and traumatic brain injury and associated dizziness



SOUND BODY. SOUND MIND.

korebalance™

korebalance™

SOUND BODY.

The Elderly

See how our customers in the Rehab and Anti-Aging industries have benefited:



Falls are the #1 cause of accidental deaths in people above 65.

- Korebalance™ is key to fall prevention programs
- Reduces the risk of elderly falls and Improves quality of life
- Decreases liability for senior centers
- Decreases injury/surgery rehabilitation time
- Improves performance in life enhancing activities, such as tennis, golf, surfing or skiing
- Enhances resident retention in senior facilities
- Safer than “wobble boards” because the surface is adjustable to match all levels of ability and weight
- Superior safety with the optional hand rails, harness and ramp



SOUND BODY. SOUND MIND.

korebalance™

An elderly couple is dancing in a bright, spacious room. The man is wearing a red vest over a white shirt and dark trousers, and the woman is wearing a red top and a black skirt. They are both smiling and looking at each other. The room features large windows with white curtains, a radiator on the left, and a wall sconce. The floor is polished wood.

SOUND MIND.

korebalanceTM

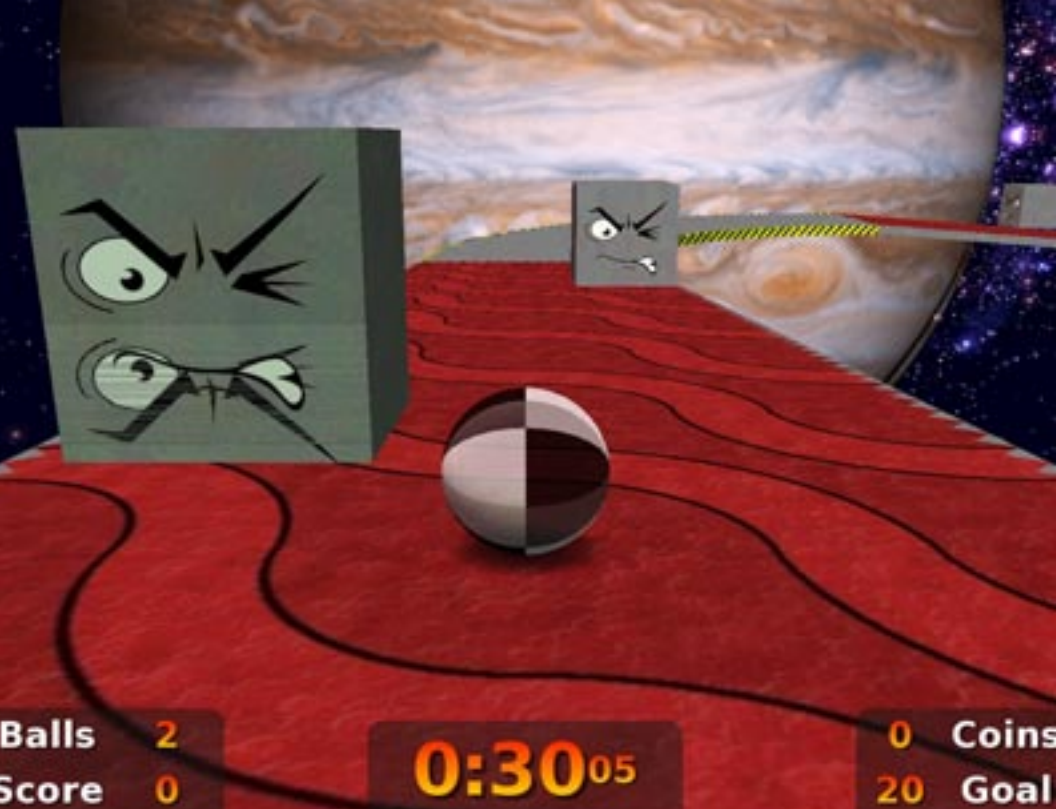
Assisted Living & Medical Models Include

- Korebalance™ Software Pre-Installed (Linux OS)
- Adjustable 17" Touch-Screen
- Interactive 3-D software games assess & train balance
- Patented Pneumatic Pressure System
(adjustable rigidity based on ability and weight)
- Safe "start-up" & "shut down" modes
- Audio capabilities
- Anti-slip surface
- Patient safety handlebars
- Allows for training of right, left or both feet
- Test (dynamic & static tests)
- Training (includes 2-D & 3-D games)
- Reporting & Printing Capabilities
- Optional Safety Ramp & Harness
- Data Analysis and results measurements



SOUND BODY. SOUND MIND.

korebalance™



Increase Decrease 2 Level 2

Lee Sarango Limits of stability Static balance test **Dynamic balance test** Maze

Circle Square Infinity This way That way Left foot Right foot Hands Weights Time 30 Goal

S Static
L Limits
D Dynamic
M Maze
F Finish

Type: Dynamic
 Name: Lee Sarango
 Pattern: Infinity
 Size: Large
 Speed: Fast
 Direction: CW
 Feet: Both
 Heads: On
 Weights: 0
 Duration: 30
 Level: 2
 Difficulty: 0
 Score: 13197

Time: 30

Increase Decrease 3 Level 3

Lee Sarango Limits of stability Static balance test **Dynamic balance test** Maze

Circle Square Infinity This way That way Left foot Right foot Hands Weights Time 30 Goal

S Static
L Limits
D Dynamic
M Maze
F Finish

Type: Dynamic
 Name: Lee Sarango
 Pattern: Circle
 Size: Large
 Speed: Fast
 Direction: CW
 Feet: Both
 Heads: On
 Weights: 0
 Duration: 30
 Level: 3
 Difficulty: 0
 Score: 0

Time: 30





korebalance™

SOUND BODY.

Benefits



Of the exercise components studied (resistance, balance, endurance and flexibility) only balance training had a significant individual effect on risk of falls.

~ U.S. Preventive Services Task Force

- Reduced liability for patient falls
- Documented compliance with JCAHO and other regulatory bodies such as Medicare and Medicaid
- Improved, monitored, documented Quality Control/Quality Assurance in all facilities
- Ease of training new employees because of established, locked-in protocols
- Ability to relegate some fall-prevention tasks to entry level personnel, freeing up highly trained, more expensive personnel for other tasks
- Better patient care, better results, documented outcomes
- Improved PR in the facility's service area through providing better patient care as well as through enhanced favorable name recognition



SOUND BODY. SOUND MIND.

korebalance™

A woman with short white hair, wearing a dark blue sweater and grey pants, is riding a silver bicycle away from the camera on a paved path. To her right, a man wearing a blue baseball cap, a tan jacket, and dark pants is riding a grey motorized scooter. The path is flanked by tall grass and a row of streetlights on the right side. The sky is clear and blue.

korebalance™

SOUND MIND.

STATISTICS ARE GRIM.

The statistics are sobering. Approximately 35% of people over the age of 65 years experience one or more falls each year. Nearly 70% of all emergency department visits by people over the age of 75 are related to falls. Although the home is often considered the safest place, this is not true. More than 60% of falls occur in the home. As the population in the United States continues to age, preventing falls is paramount to keeping health costs down and preventing further disability of the elderly. The causes of falls can involve both intrinsic and extrinsic factors. Intrinsic factors pertain to the individual's body, such as visual acuity, muscle strength, balance, and mental status. Medication changes, lack of sleep, or an acute illness can all affect mental status while cataracts or glaucoma can affect visual acuity. Extrinsic factors pertain to the individual's environment including stairs, clutter, and inclement weather. At times, intrinsic and extrinsic factors may combine to contribute to a fall. For example, impaired mobility due to poor balance and decreased strength coupled with a set of stairs can cause a fall. Studies show that of falls that occur at home, 25% are caused by an extrinsic factor such as clutter or a slippery floor. Identifying both the intrinsic and extrinsic factors of a specific fall is important in eliminating the chances of a second incident. Much has been studied about falls-why they occur and how to prevent them. Fear of falling is arguably one of the most important factors. It has been documented in 20%-50% of the general elderly population. Fear of falling can be just as debilitating as a history of actual falls. As people reduce the frequency or intensity of their activities due to a fear of falling, deconditioning, decreased social activity, and possible isolation result. Seniors can modify these risk factors by increasing lower body strength and improving balance through regular physical activity.

Rehab & Medical Models Cont...

Footprint: 38" x 48"

Height: 80" (6" x 8") Fully Extended

Weight: 165 lbs

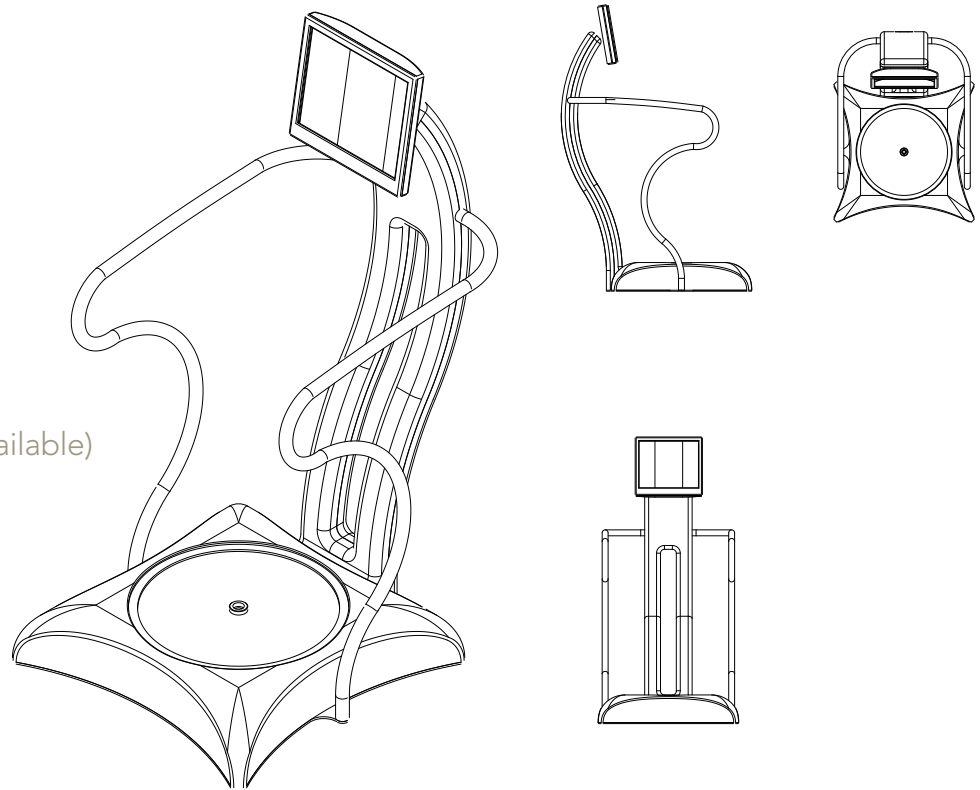
110 Volt A/C

5 AMPS

Made in the USA

Ships on a 36 x 60" palette (4 boxes)

90 Day Warranty Included (Additional Warranty Available)



SOUND BODY. SOUND MIND.

korebalance™

A man in a dark suit and a toddler in a white shirt and diaper are walking on a sandy beach towards the ocean. The man is in the foreground, walking away from the camera. The toddler is further ahead, also walking away from the camera. The ocean is in the background, with waves breaking on the shore. The sky is overcast with grey clouds.

SOUND MIND.

korebalanceTM

Revolutionize



The Korebalance™ superior technology provides fun and challenging games to make exercise addictive!

Experience the revolutionary Korebalance™ Technology

- In-patient & Out-patient Rehab
- Wellness Centers
- Senior fall screening
- Physical Therapists & Physicians
- Sports Medicine & Orthopedic Rehabilitation
- Balance & Core training
- Personal Trainers
- Professional Sports Teams
- University Athletic Trainers

Provide a 15 minute balance assessment for new members or members using Personal Training.
Bring members back to re-assess their progress, improvement and results.



SOUND BODY. SOUND MIND.

korebalance™

korebalance™

SOUND BODY.



The Experience

Take advantage of our 15 years of proven experience in the Medical marketplace!

Korebalance™ increases the quality of treatment and marketability of Rehab services which helps recruit and maintain more patients

- Increased marketability of services due to high-tech comprehensive falls prevention solution
- Return-On-Investment (ROI) can be as short as 4 months, due to insurance reimbursements*
- Rehabilitate and maintain patients in-house, without having to refer them out
- Write off 50% tax depreciation on new equipment purchases
- Improves the quality of life for patients with degenerative diseases (e.g. Multiple Sclerosis, Amyotrophic Lateral Sclerosis (ALS), Ataxia and Parkinson's)
- Rehabilitates stroke patients and head injuries

*depending on number of patient sessions




SOUND BODY. SOUND MIND.

korebalance™



korebalance™



From 2000 to 2040, the number of people age 65 or older is projected to increase from 34.8 million to 77.2 million. For people over 85, the relative growth rate is even faster. Given our aging population, by the year 2040, the number of hip fractures is expected to exceed 500,000.



korebalance[™]
SOUND BODY. SOUND MIND.



"I use Korebalance™ to improve my balance and function"

~ Augie Nieto, Founder of Lifefitness & Chairman of Octane Fitness



SOUND BODY. SOUND MIND.

korebalance™